



MAESTRO 88 APREAMARE





MAESTRO 88

BUILDER : Apremare

MODEL: Maestro 88

ENGINES : 2 X Man V12 1650 cv

LENGTH: 27.10 M

CABINS: 4 / 5

This masterpiece of the sea, designed by the Italian masters of nautical elegance, combines timeless design with technological innovation.

Why choose the Maestro 88?

- Iconic Italian design: Clean, harmonious lines, a refined interior and noble materials for a timeless ambience.
- Exceptional performance: Semi-planing hull for smooth, silent sailing, cruising speed of 18 knots and exceptional range.
- Absolute comfort: Vast, light-filled spaces, luxurious cabins and top-of-the-range equipment for unrivalled comfort at sea.
- Maximum safety: Designed to face all seas with complete peace of mind, thanks to high-performance safety systems.

The Maestro 88 is the perfect blend of tradition and modernity, for unforgettable moments at sea.

PRICE on request



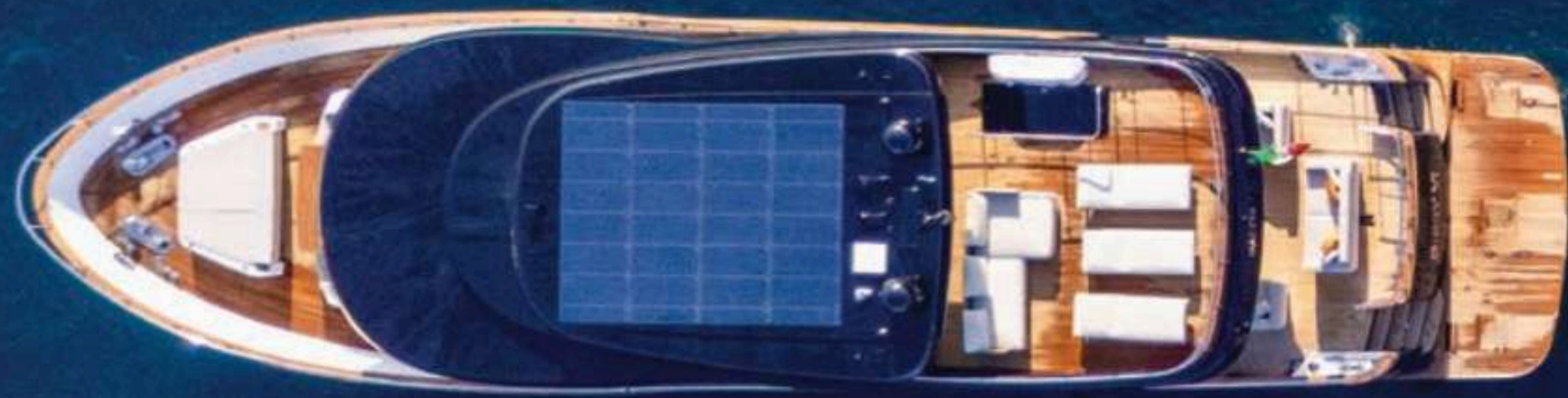








**MAESTRO 88.
THE NEW GENTLEMAN NAVETTA**















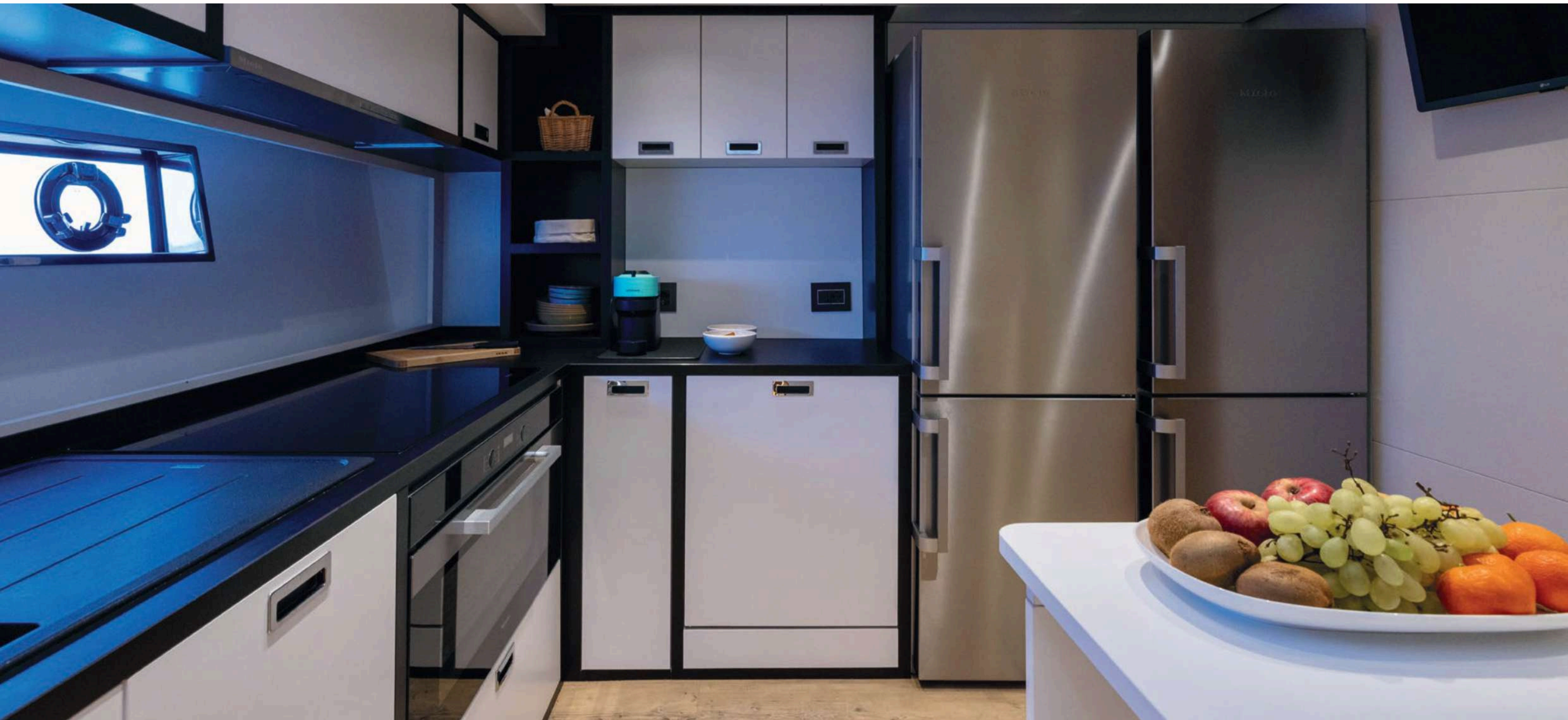




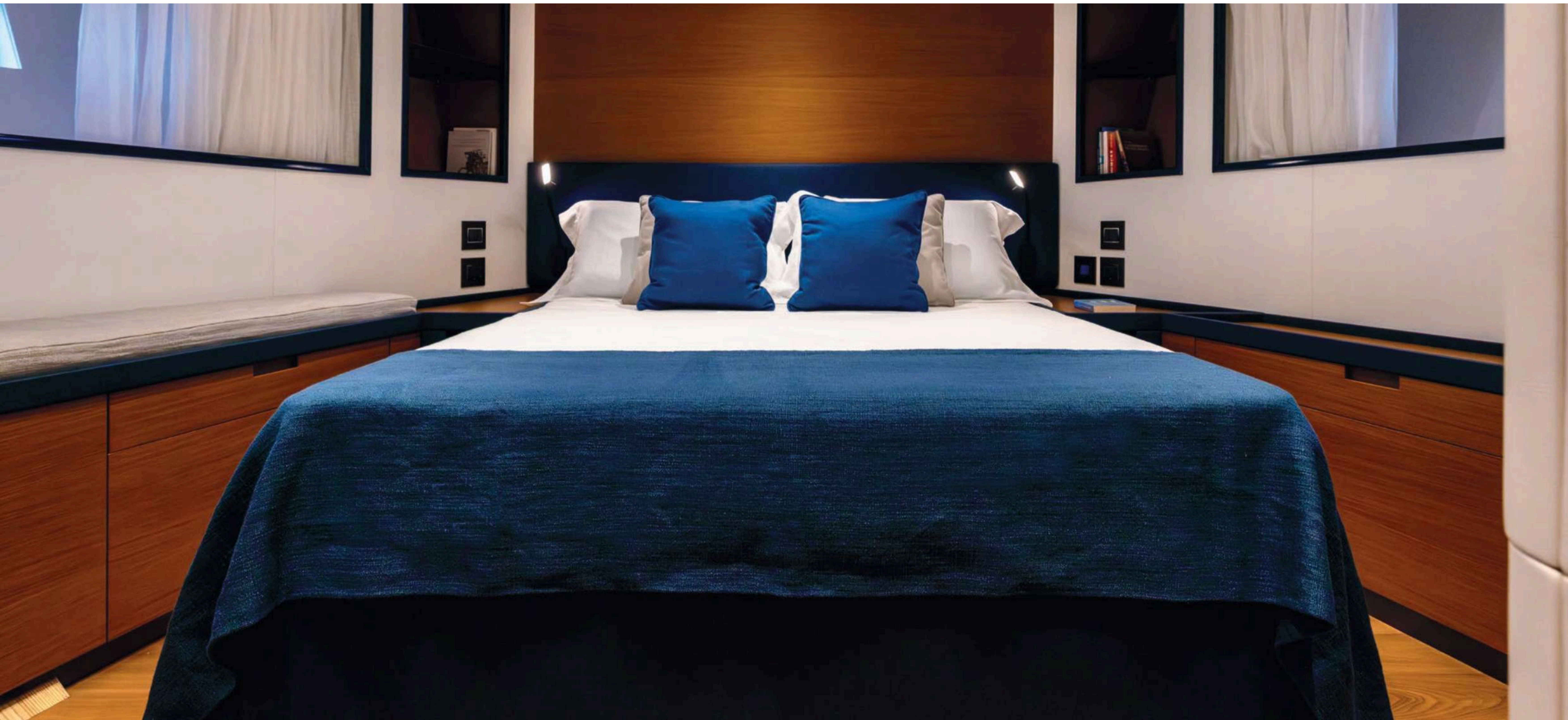












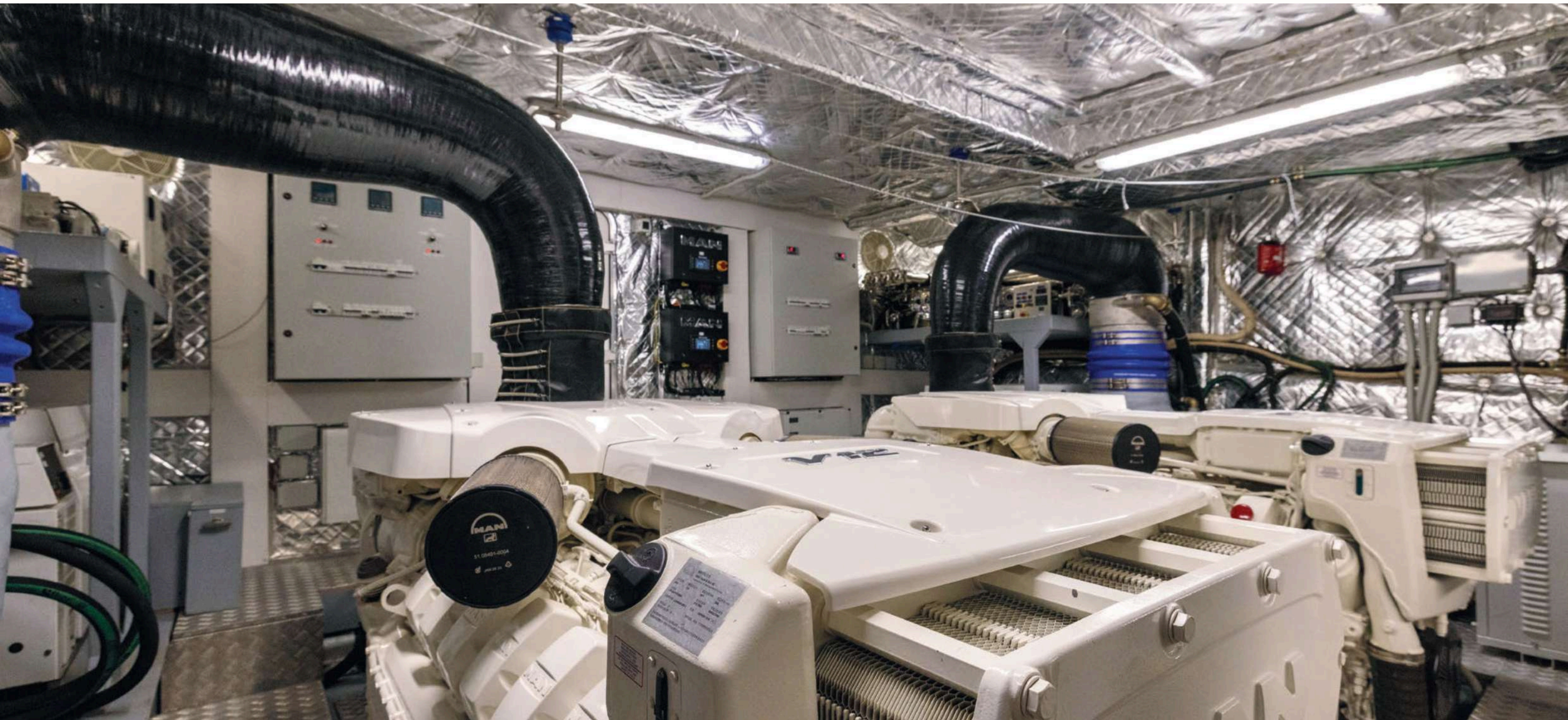










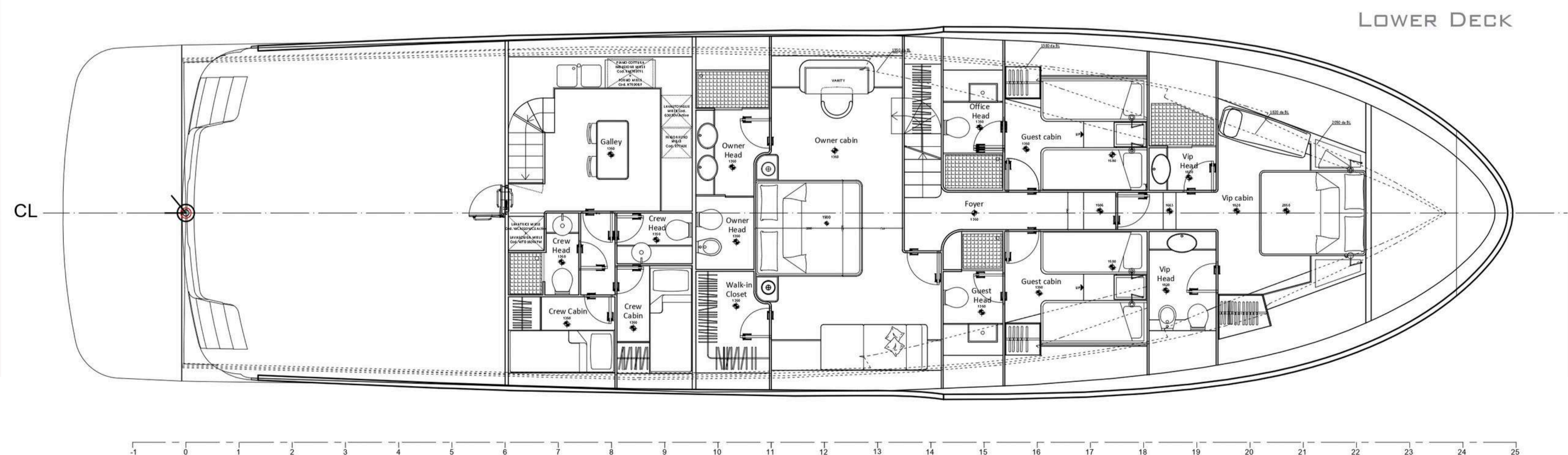
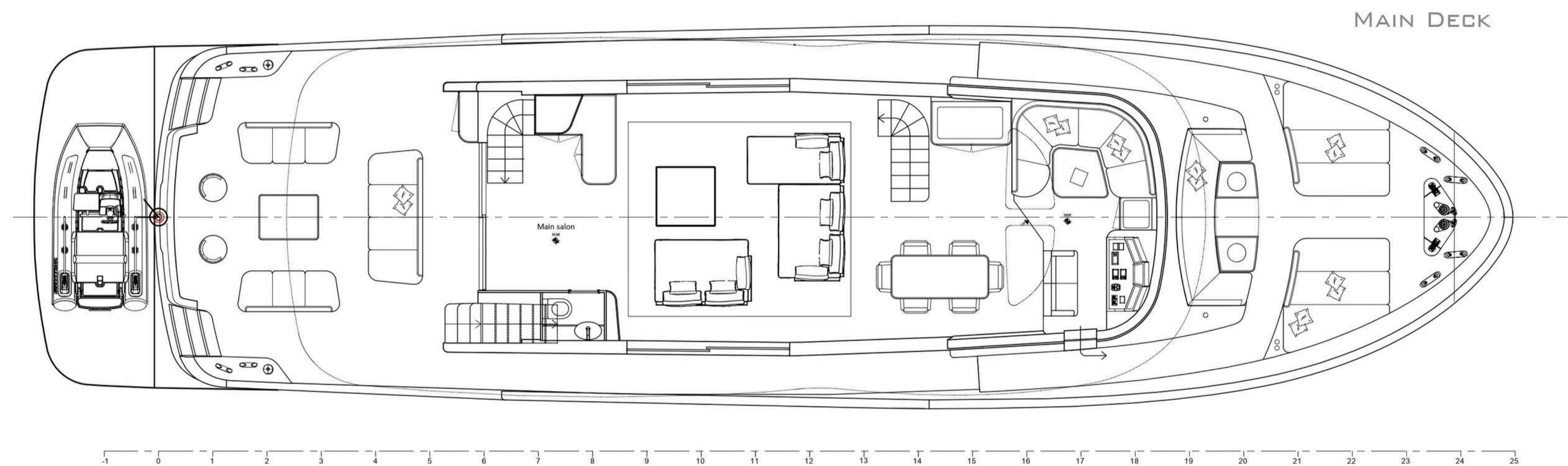
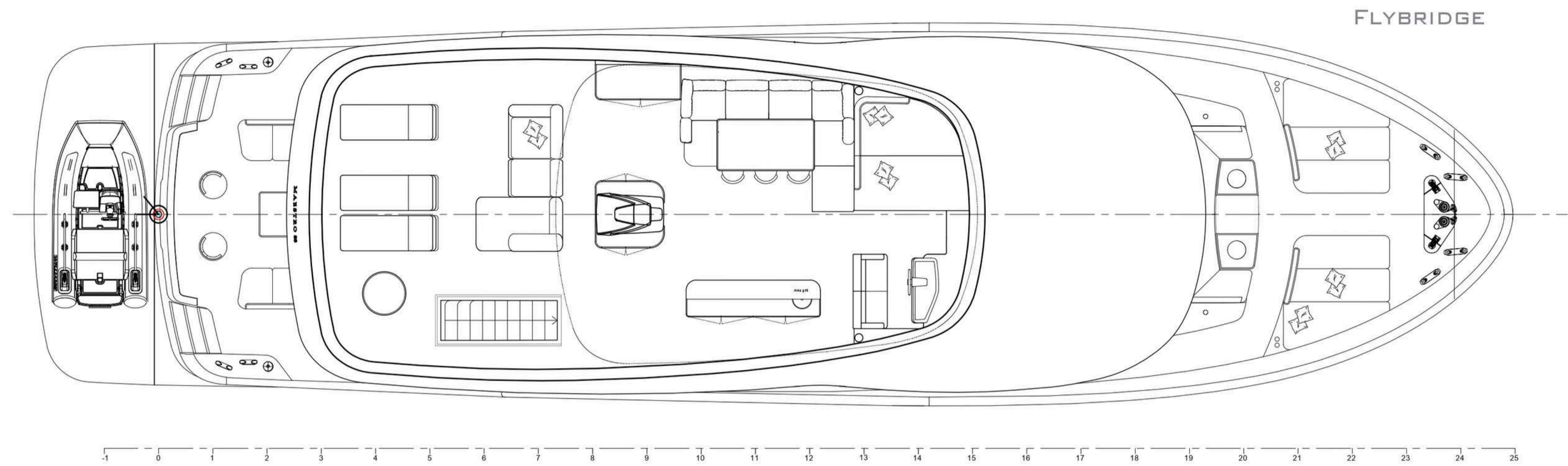


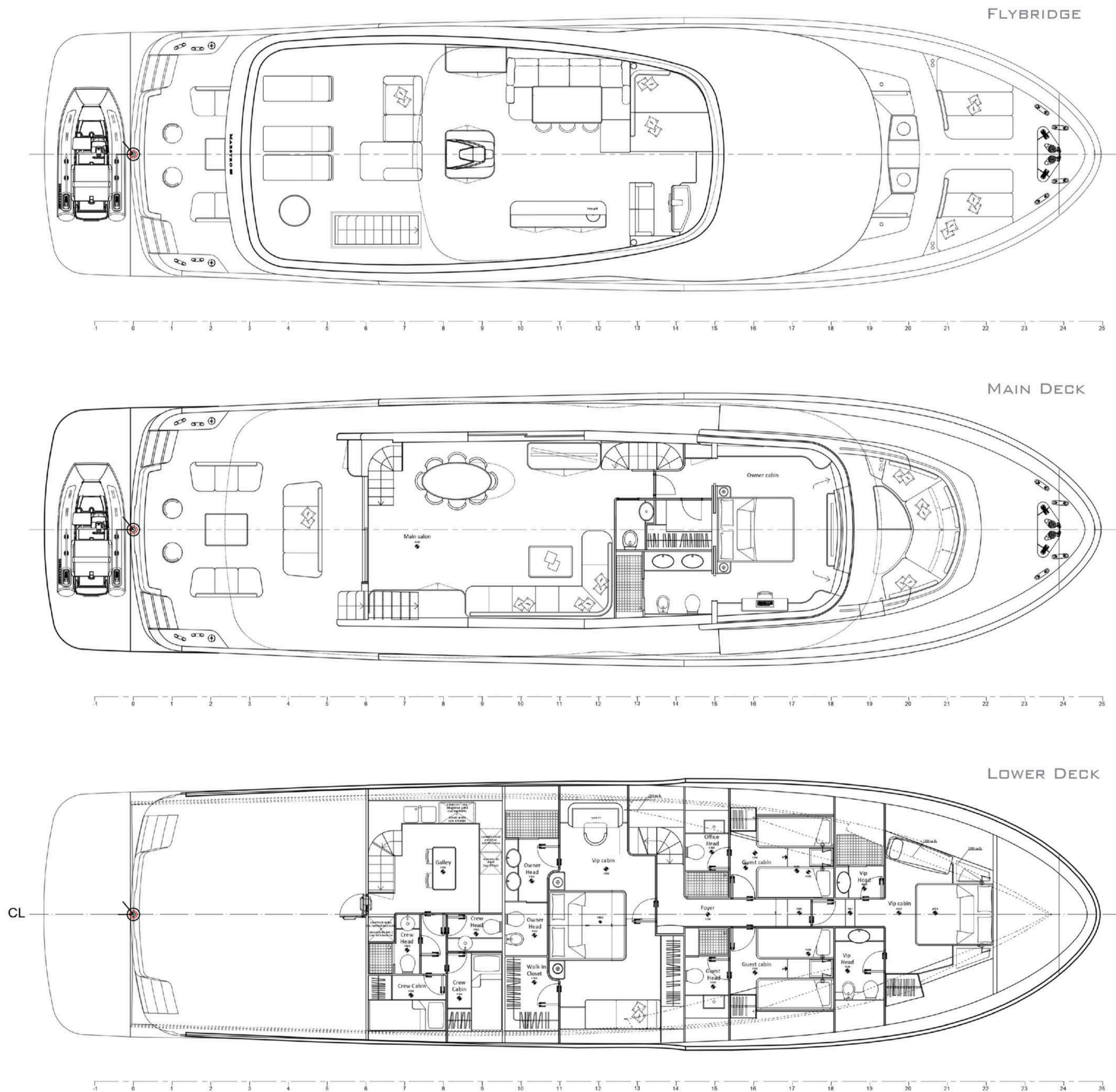


SPECIFICATIONS

BUILDER : Apremare	CRUISE SPEED : 22 KT
MODEL : Maestro 88	MAX SPEED : 28 KT
HULL : GRP	MAX GUESTS CAPACITY : 12
LENGTH : 27.10 M	MAX GUESTS SLEEPING : 8 or 10
BEAM : 6.70 M	CONSUMPTION : 390 L / H @ 18 Knots
DRAFT : 1.80 M	AUTONOMY : 320 NM
NAVIGATION CLASS : A	FUEL TANK CAPACITY : 7000 L
DISPLACEMENT : 90 T	WATER TANK : 1200 L
GUESTS CABINS : 4 or 5	BOW / STERN TRUSTHER: Yes

**4 cabins layout -
Master stateroom on
lower deck**





**5 cabins layout -
Master stateroom on
main deck**



Aquila yachting
29 Port Camille Rayon 06220 Golfe Juan FRANCE
www.aquilayachting.com

Contact: +33(0)6 10 27 79 66
Mail: sales@aquilayachting.com

